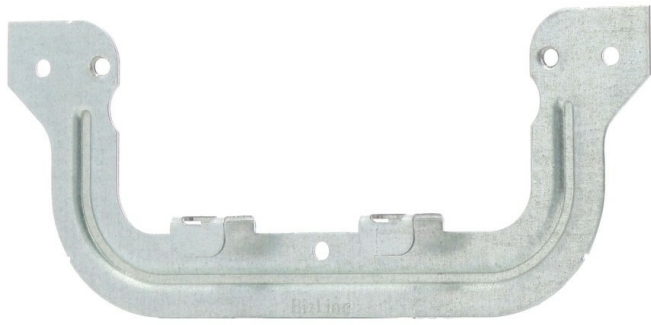


Electrical bracket C-type wallboard clip 120 x 50 mm galvanised steel (x50)



GENERAL INFORMATION

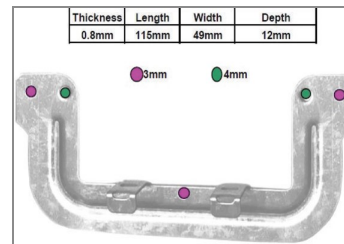
Description
Device support type C.

Technical details
Pre-galvanized steel.

Application(s)
Used to support switches and wall plate into wallboard.

ADDITIONAL INFORMATION

Length : 115 mm.
Width : 49 mm.
Depth : 12 mm.
Thickness : 0.8 mm.



LOGISTIC INFORMATION

Packaging



Carton box

Height (cm) : 10,5
Length (cm) : 13,6
Depth (cm) : 13,6
Net weight (kg) : 0,94
Gross weight (kg) : 0,99



Outer package 1



x 10.00

Carton box

Height (cm) : 25,5
Length (cm) : 33
Depth (cm) : 28,5
Net weight (kg) : 9,4
Gross weight (kg) : 10,18



Outer package 2



x 360.00

Pallet

Height (cm) : 125
Length (cm) : 120
Depth (cm) : 80
Net weight (kg) : 300,8
Gross weight (kg) : 325,8

