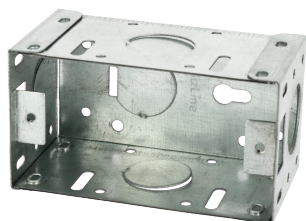


Flush box single metal



GENERAL INFORMATION

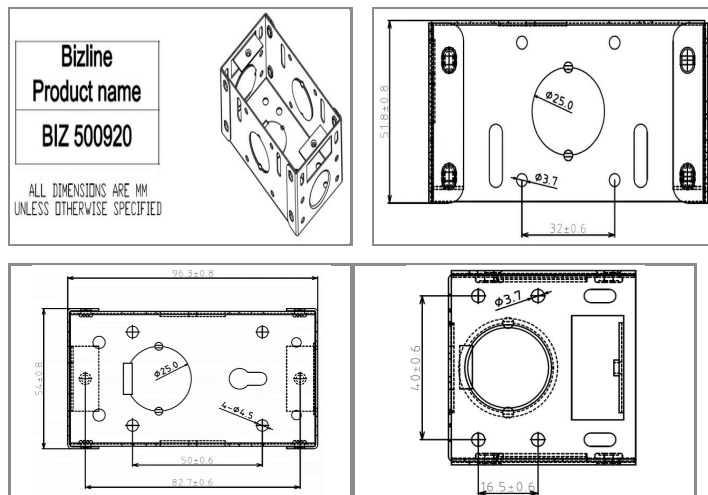
Technical details

Material: pregalvanised steel.
Length (mm): 95.
Width (mm): 52.
Depth (mm) : 52.
Distance between centre holes (mm) : 84.

Application(s)

For fixing switches and sockets to walls.

ADDITIONAL INFORMATION



LOGISTIC INFORMATION

Packaging



No packaging

Height (cm) : 5,2
 Length (cm) : 9,6
 Depth (cm) : 5,4
 Net weight (kg) : 0,129
 Gross weight (kg) : 0,129



Outer package 1



Carton box

Height (cm) : 20,5
 Length (cm) : 52,5
 Depth (cm) : 27,5
 Net weight (kg) : 12,9
 Gross weight (kg) : 13,3

x 100.00



Outer package 2



Pallet

Height (cm) : 130
 Length (cm) : 120
 Depth (cm) : 80
 Net weight (kg) : 464,4
 Gross weight (kg) : 490



x 3600.00