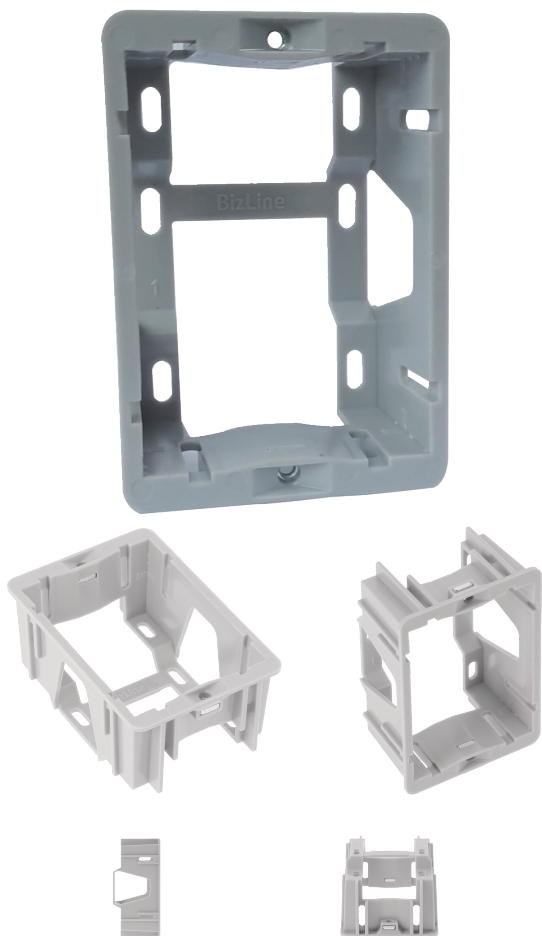


Flush box single plastic in polycarbonate 94 x 65 x 45 mm with metal thread



Characteristics

Number of gangs : 1

Benefits

- Many holes that allow the box to be fixed in the wall in the ideal position
- Offset rear support bar helps in routing cables.

GENERAL INFORMATION

Description

Single unit polycarbonate flush-mounting box
Vertical or horizontal installation.

Technical details

Material: polycarbonate
Screw holder: metal
Length (cm): 9.4
Width (cm): 6.5
Depth (cm): 4.5

Application(s)

Allows cables to be routed and the switch unit to be securely fixed to the wall.

ADDITIONAL INFORMATION

Material : Polycarbonate + VO.
Screw : M3.5x0.8
Glow wire resistance : 960°C.

LOGISTIC INFORMATION

Packaging



No packaging

Height (cm) : 4,5
 Length (cm) : 9,3
 Depth (cm) : 6,5
 Net weight (kg) : 0,027
 Gross weight (kg) : 0,027



Outer package 1



Carton box

Height (cm) : 21,5
 Length (cm) : 47
 Depth (cm) : 26
 Net weight (kg) : 2,7
 Gross weight (kg) : 3

x 100.00



Outer package 2



Pallet

Height (cm) : 130
 Length (cm) : 120
 Depth (cm) : 80
 Net weight (kg) : 105
 Gross weight (kg) : 115



x 3500.00